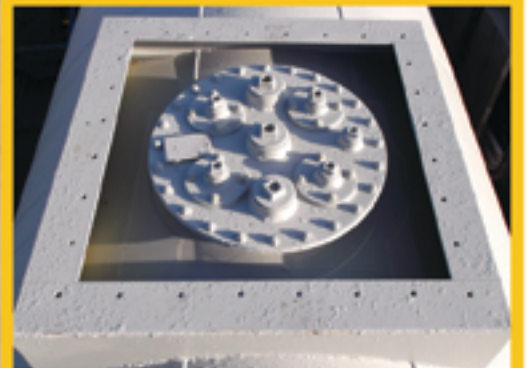


Tel: 087 927 0745
087 225 0748



McCabe TANKS

sales@mccabetanks.ie ~ www.mccabetanks.ie



www.mccabeengineering.ie





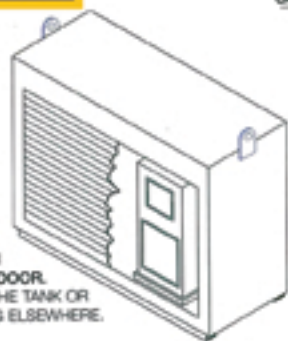
Bunded Overground Storage Tanks

Totally enclosed bunded tanks are very secure units. These tanks come with a lockable bund hatch as standard and with the option of a pump house, complete with roller shutter door.

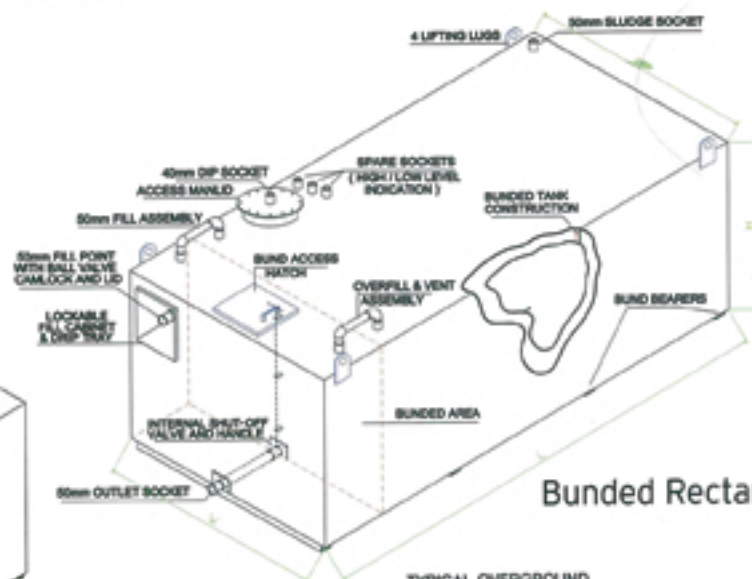
These units can be supplied with pumps, flow meters and autoshut-off nozzles on request. All tanks are pressure tested to 0.7 bar. Each tank has a number and a corresponding test certificate issued before dispatch.

They can have top or bottom outlets, with a manual shut-off valve accessible through the bund hatch. There is less site preparation and no need to build a concrete bund or support walls. These tanks are available in a wide range of capacities.

Overground cylindrical tanks have the option of steel support cradles welded to the tank.



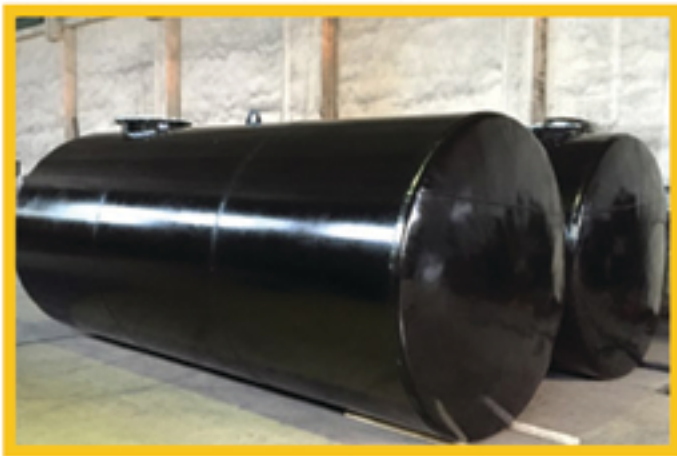
OPTIONAL: PUMP HOUSE WITH PUMP AND ROLLER SHUTTER DOOR. THIS UNIT CAN BE BUILT WITH THE TANK OR STAND ALONE FOR POSITIONING ELSEWHERE.



Bunded Rectangular Tanks

TYPICAL OVERGROUND STEEL STORAGE TANK. MULTI COMPARTMENT TANKS AVAILABLE UPON REQUEST.





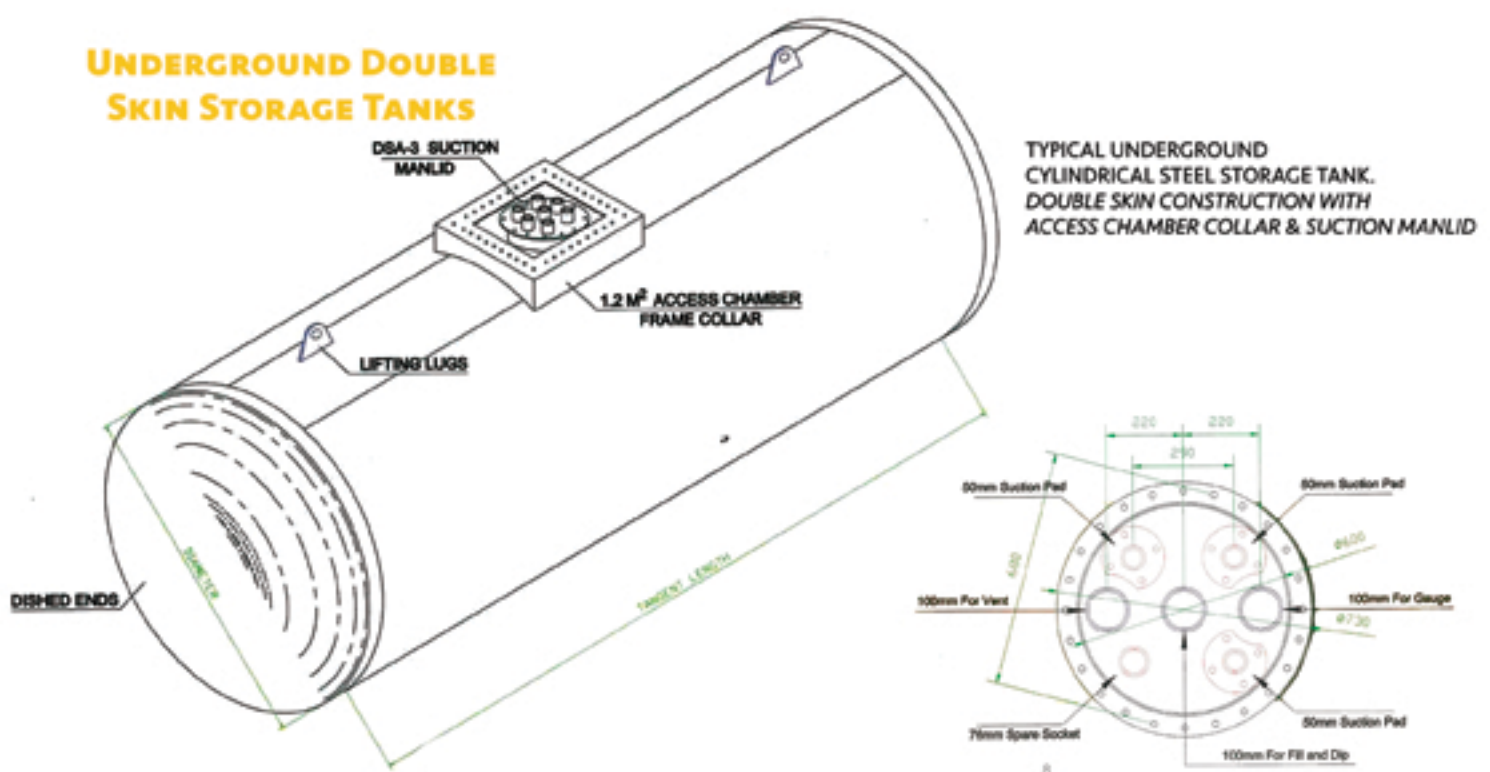
Double Skin Underground Storage Tanks

Double skin underground storage tanks have an internal shell manufactured from 6mm steel and an external shell manufactured from 4mm steel. The dished ends are manufactured from 6mm plate

They are supplied with DSA 3-suction 600mm diameter manlid with double tapered sockets and malleable iron plugs. Also available as standard are a 1.2m² or round access chamber frame, heavy duty ratchet holding down strap, calibrated dip rod lifting lugs and dry leak detection system.

A standard paint finish is available for underground tanks with the option of tank blast cleaned to SA 2.5 and finished in a high quality epoxy coating to 800microns. A heavy duty ground level manhole cover and frame (750mm x 600mm) and multi-compartment tanks are available as optional extras.

All tanks are pressure tested to 0.7 bar. Each tank has a number and a corresponding test certificate issued before dispatch.



Underground Storage Tanks

OUR TANKS ARE MANUFACTURED IN ACCORDANCE TO BS EN 12285-1

TANKS AVAILABLE IN A WIDE RANGE OF CAPACITIES IN SINGLE OR DOUBLE SKINNED.

SINGLE OR MULTI COMPARTMENTS AVAILABLE.

LIFTING EYES FOR OFF-LOADING & INSTALLATION.

ACCESS CHAMBERS TO SUIT FIBRELITE SYSTEMS.

INTERNAL SUCTION PIPES.

LEAK DETECTION.

HOLDING DOWN STRAPS.

TANK BLAST CLEANED TO SA 2.5 AND FINISHED IN A HIGH QUALITY EPOXY COATING. GLASS FLAKES WITHIN THE COATING PROVIDES EXTREME CORROSION PROTECTION AND IS PARTICULARLY SUITED FOR SUMERGED AREAS.



Steel Petrol Interceptors & By-Pass Separators

Stainless Steel Ad-Blue Tanks



Overground Bunded Storage Tanks

OUR TANKS ARE MANUFACTURED IN ACCORDANCE TO EN 12285

LIFTING EYES FOR ON SITE INSTALLATION.

CYLINDRICAL OR RECTANGULAR CONFIGURATION.

AVAILABLE IN A RANGE OF CAPACITIES.

SINGLE OR MULTI COMPARTMENTS AVAILABLE.

BUND CAPACITY 110%

UNITS AVAILABLE WITH SECURITY FILL BOX WITH FILL PIPES TERMINATING WITHIN.

LARGE PUMP CABINETS AVAILABLE WITH ROLLER SHUTTER DOORS, DRIP TRAY AND ASSOCIATED PIPE WORK.

EXTERNAL COATING ANTI-CORROSIVE PRIMER AND HARD TOP FINISH IN A RANGE OF COLOURS.

LEAK DETECTION, GAUGES HIGH LEVEL AND LOW LEVEL ALARMS AVAILABLE

UNITS EXTERNALLY COATED WITH ANTI-CORROSIVE PRIME AND HARD TOP FINISH.

AVAILABLE IN A WIDE RANGE OF CAPACITIES.

HORIZONTAL, VERTICAL & RECTANGULAR CONFIGURATIONS.

SINGLE OR MULTI COMPARTMENTS AVAILABLE

TANKS CAN BE SUPPORTED ON HEAVY DUTY CRADLES FULLY WELDED TO TANK

TANKS PRESSURE TESTED AND CERTIFIED

1,000 to 120,000 Litre capacity.

Single and double skin.

In-house blast and paint facilities.

Suitable for holding oils, chemicals, water and more.

Standard sizes or bespoke.

Designed to your
Specification

Licacullion, Shantonagh,
Castleblayney, Co. Monaghan.
A75 YR13

sales@mccabetanks.ie
www.mccabetanks.ie

Tel: 087 927 0745
087 225 0748

